

PC Board Layout Component Side Shown

NOTES:

ELECTRICAL:

1. VOLTAGE RATING : 125 VAC RMS.
2. CURRENT RATING : 1.5 AMP.
3. CONTACT RESISTANCE : 35 MILLIOHMS MAX.
4. INSULATION RESISTANCE: 1000 MEGOHMS MIN @ 500 VDC.
5. DIELECTRIC STRENGTH : 1000 VAC RMS 60Hz, 1MIN.

MECHANICAL:

1. HOUSING MATERIAL : GLASS FILLED POLYESTER UL94V-0.
2. CONTACT MATERIAL : PHOSPHOR BRONZE t=0.35mm.
3. PLATING : GOLD PLATING OVER NICKEL.
4. OPERATING LIFE : 750 CYCLES MIN.
5. PCB RETENTION PRE-SOLDER : 1 LB MIN.
6. PCB RETENTION POST-SOLDER: 10 LBS MIN.

ENVIRONMENTAL:

1. STORAGE : -40°C TO +85°C.
2. OPERATION: 0°C TO 70°C.

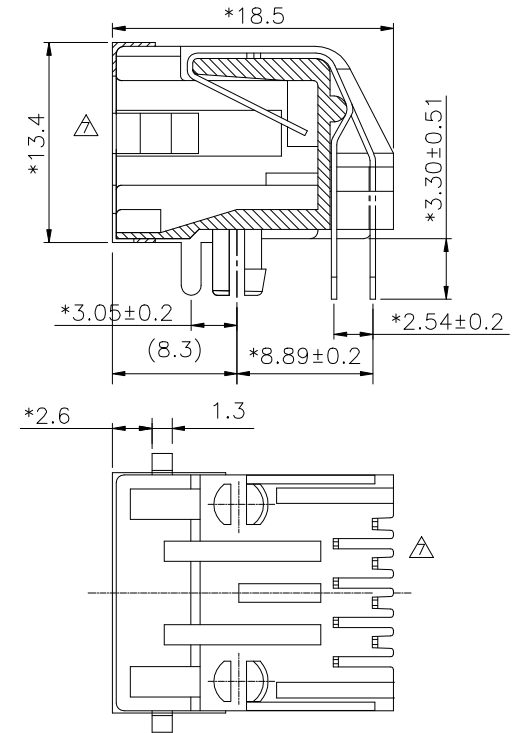
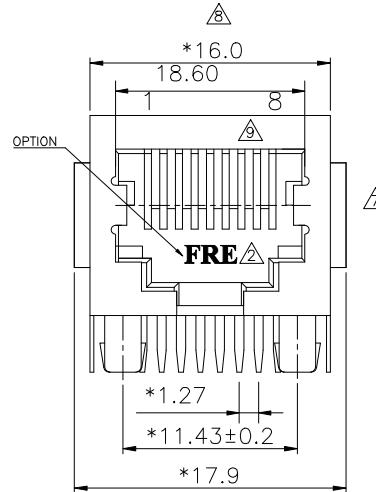
MATES WITH MODULAR PLUG CONFORMING TO FCC PART 68, SUBPART F.

CUL FILE NO. E163191

PART NUMBER: E6288-0X0XXX

- SHIELD:
 - 1- 3u" 2- 6u"
 - 3- 15u" 4- 30u"
 - 5- 50u"
- 1-W/ PANEL STOP,W/O KEY,W/O "FRE" LOGO
- A-W/ PANEL STOP,W/O KEY,W/ "FRE" LOGO
- 0-PBT+15% BK
- 2-PBT+30% BK
- 3-FR50 BK
- 7-FR52 BK
- A-PBT+30% BL

		REVISION RECORD			
REV	ECO	DESCRIPTION	DRFT	CHKD	
6		ADD PART NUMBER	LUSHENG		
5		MODIFY DRAWING	8/14/00		
4		MODIFY DRAWING	11/21/02		
3		ADD PART NUMBER	12/18/02		
2		ADD PART NUMBER	08/05/03		
1		ADD PART NUMBER	06/05/04		



LEAD FREE PART NUMBER:

E6288-0X0XXX-L

SHIELD:
3-NICKEL
E-TIN

- 1- 3u" 2- 6u"
- 3- 15u" 4- 30u" 5- 50u"
- 1-W/ PANEL STOP,W/O KEY,W/O "FRE" LOGO
- A-W/ PANEL STOP,W/O KEY,W/ "FRE" LOGO
- 0-PBT+15% BK 2-PBT+30% BK
- 3-FR50 BK 7-FR52 BK
- A-PBT+30% BL C-PBT+30% COOL GRAY 8u

← MM (INCH) →		DFTO JAMIE	DATE 10/7/97	FULL RISE ELECTRONIC CO., LTD	
TOLERANCES EXCEPT AS NOTED		CHKD QUILER	DATE 2005/2/19		
		MFO	DATE	TITLE AMP L/P FRONT SHIELDED PCB JACK 8P	
		APPV LUSHENG	DATE 2005/2/19	DRAWING NO. GE623054	
		MATERIAL :		/PART NO. SEE NOTE	
ANGLES ±		QT'Y :		SIZE A3	
THIRD ANGLE PROJECTION		FINISH :		REV 9	
		SCALE : 2.5:1		DO NOT SCALE DRAWING	
				SHEET X OF Y	